

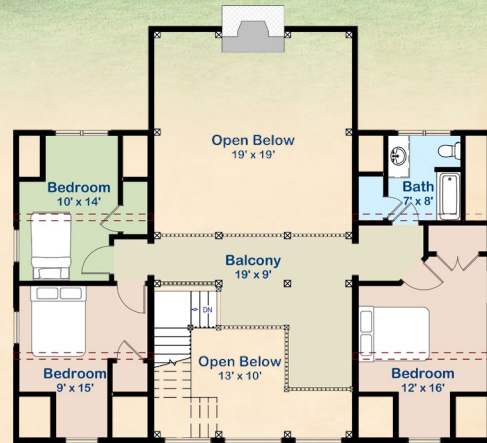


live simply
TIMBER FRAME LIVING



The **Live Simply Laker Model** offers an adaptable timber frame floor plan starting at 2,500 sq. ft. with an open-flow floor plan, inviting kitchen and a first floor master.

Designed with Mid-Atlantic Timberframes quality, using pre-fab timbers and structural insulated panels (SIP) ensures a structurally sound and energy-efficient home. Enjoy the wrap-around porch outside and the vaulted ceiling inside.



Second Floor - 888 sq. ft.



First Floor - 1658 sq. ft.



34 S. Vintage Rd., Paradise, PA 17562
MidatlanticTimberframes.com
717-288-2460